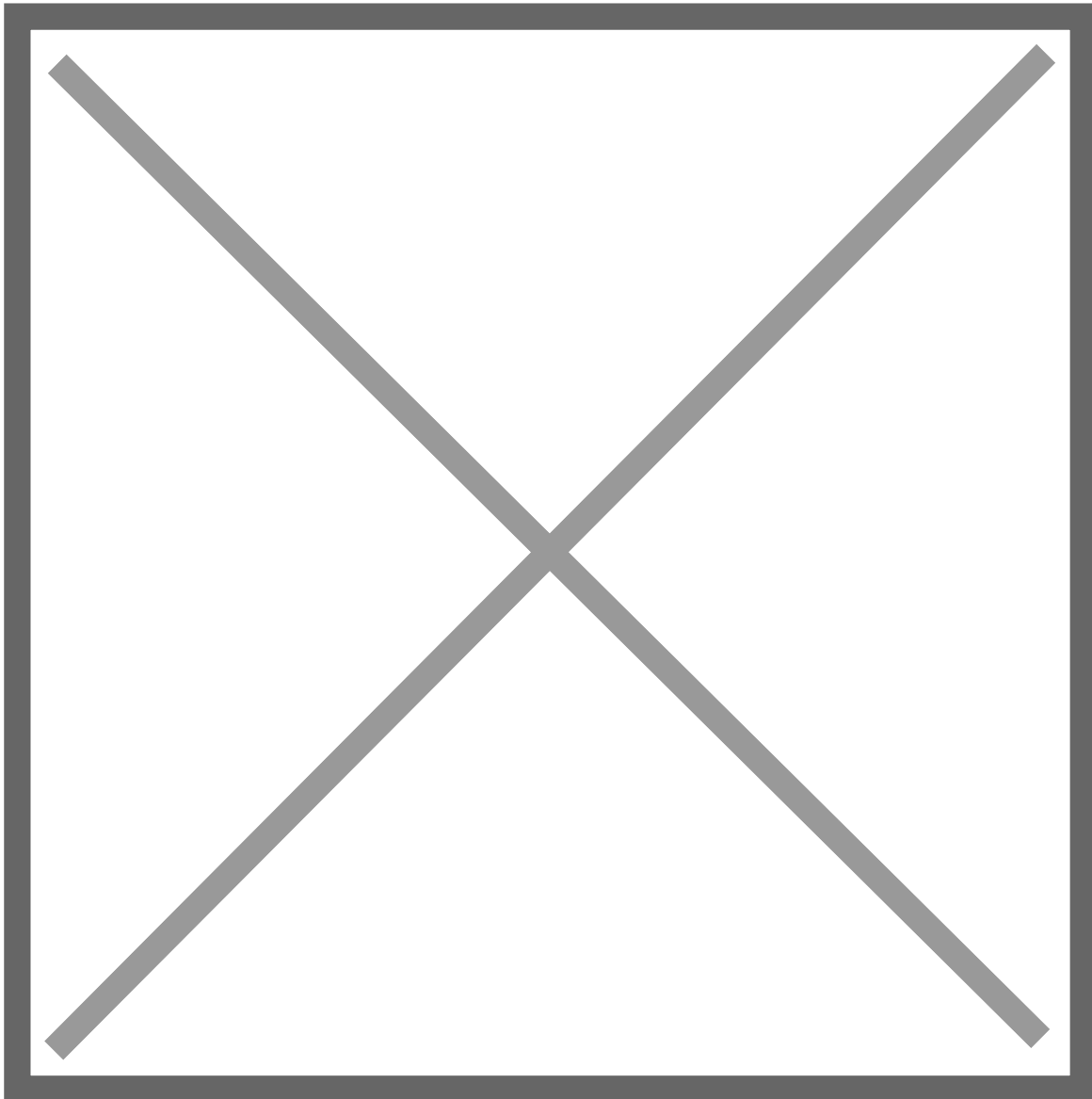


Exemplos | Examples

- Exemplo 1 | Example #1

Paciente masculino, 73 anos, com queixa de cefaleia. Tem diagnóstico de hipertensão arterial. Em uso de Losartana. Ao ECG, observamos a presença de três morfologias distintas da onda P no DII longo, compatível com **ritmo atrial multifocal**. Observa-se, também, prolongamento do intervalo QT.

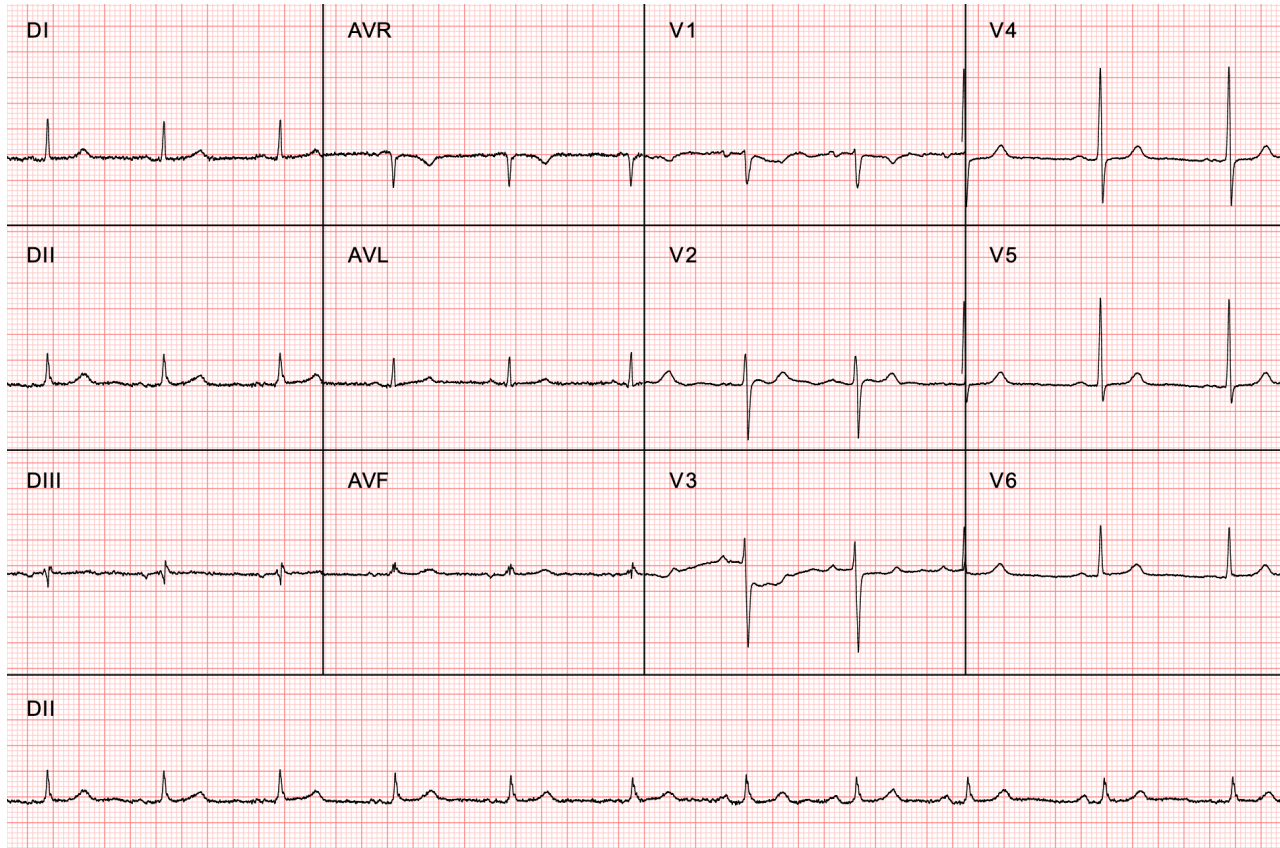
73-year-old male patient presenting with headache. He has a diagnosis of systemic arterial hypertension. Current medication: losartan. On ECG, we observe the presence of three distinct P wave morphologies on long lead DII, consistent with multifocal atrial rhythm. Prolonged QT interval is also observed.



- Exemplo 2 | Example #2

Paciente do sexo feminino, 70 anos, exame eletivo. Ao ECG, observamos a presença de três morfologias distintas da onda P no DII longo, compatível com **ritmo atrial multifocal**.

70-year-old female patient, elective examination. On ECG, we observe the presence of three distinct P wave morphologies on long lead DII, consistent with multifocal atrial rhythm.



Revision #2

Created 22 May 2025 18:26:07 by Gabriela Miana

Updated 13 October 2025 18:24:18 by Gabriela Miana